



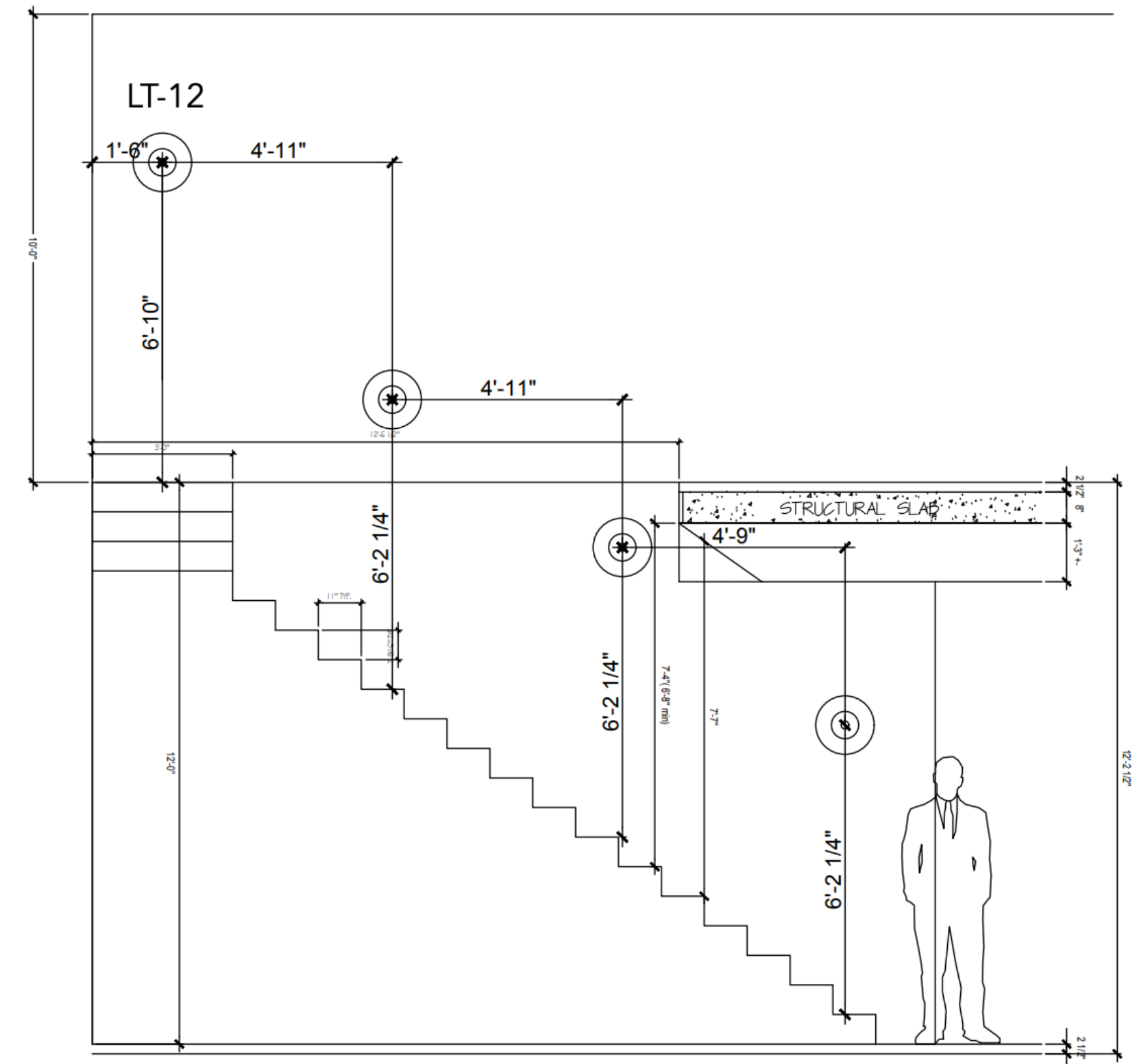
part 4

clarification through
elevations



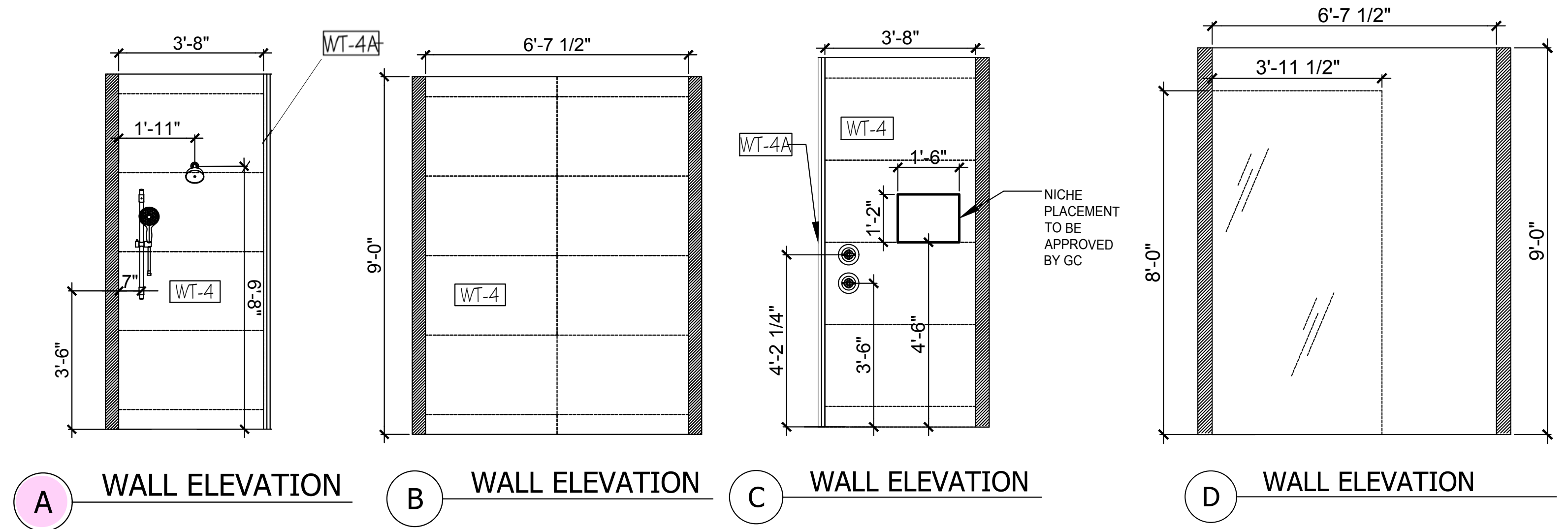
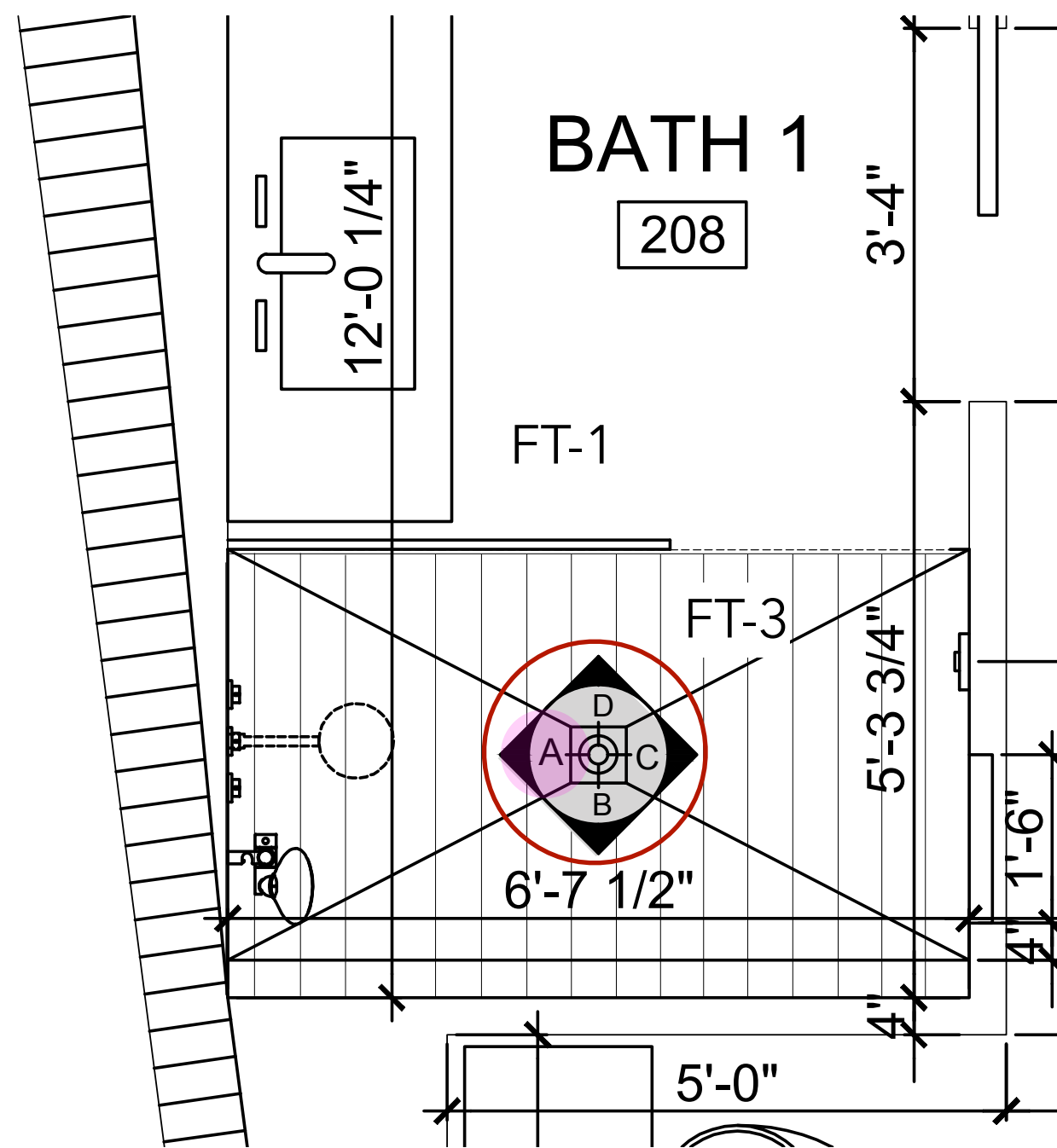
what needs an elevation

- Shower walls (niche location, bench, plumbing heights, valve trim locations, etc.)
- Hanging lighting fixture heights (pendants, chandeliers, etc.)
- Sconce height & placement
- Cabinetry





how to use a compass in your drawings



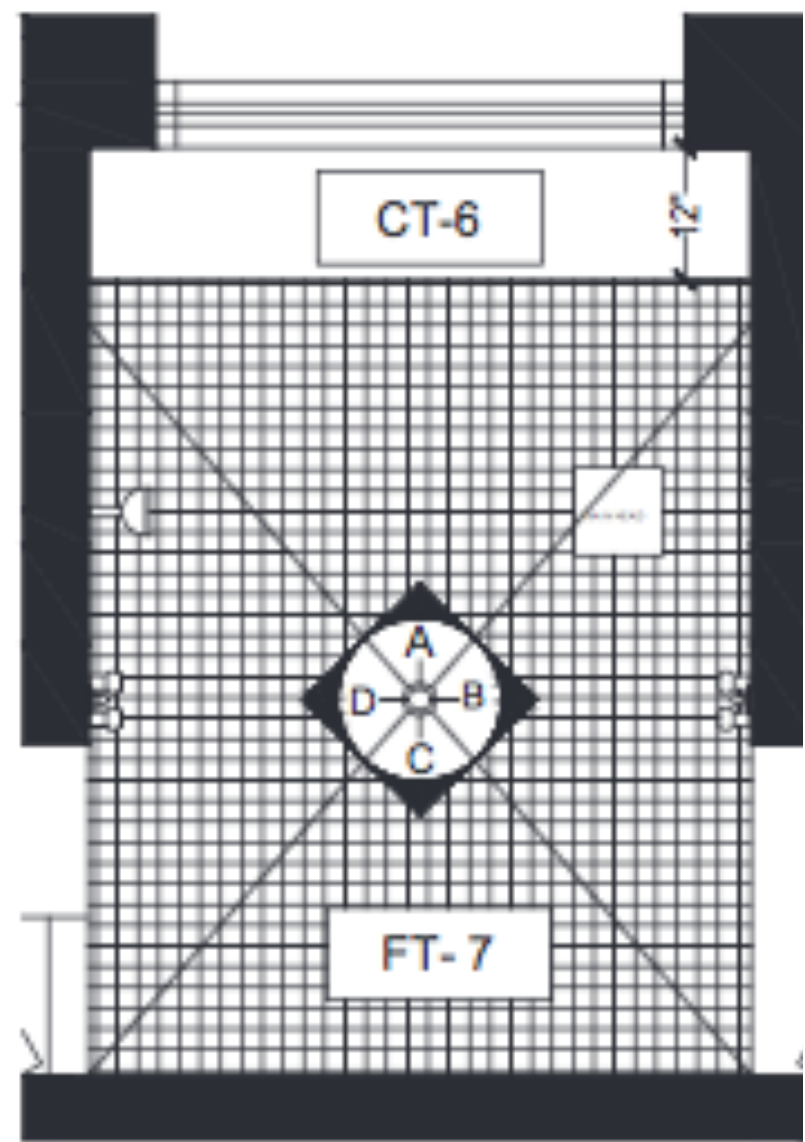
- The compass gives you the necessary information to get you oriented with a space when you are looking at elevation drawings
- Each point of the compass is labeled by a letter which corresponds with a wall elevation

BATH 1 SHOWER KEY PLAN

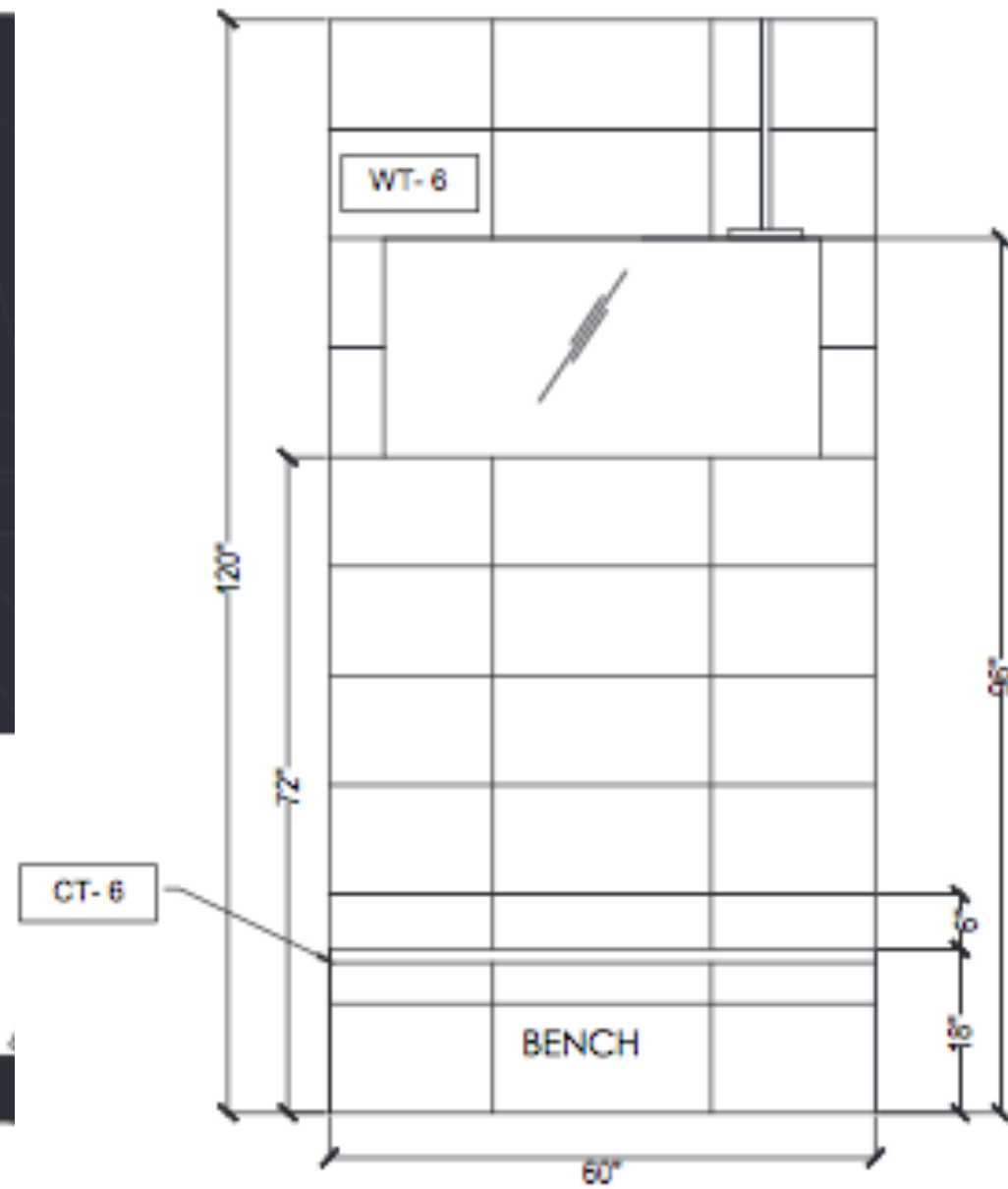
NTS



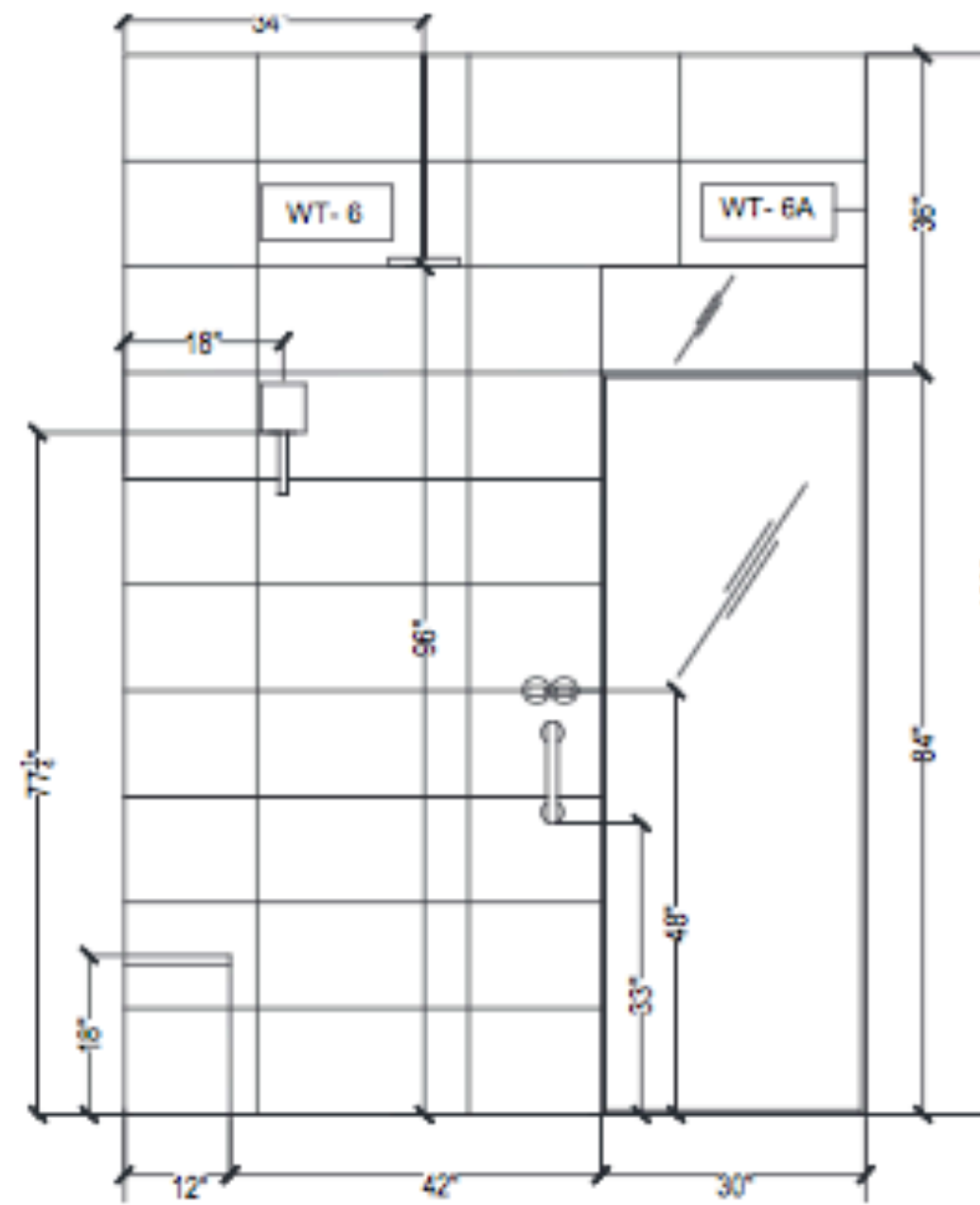
how to create necessary drawings



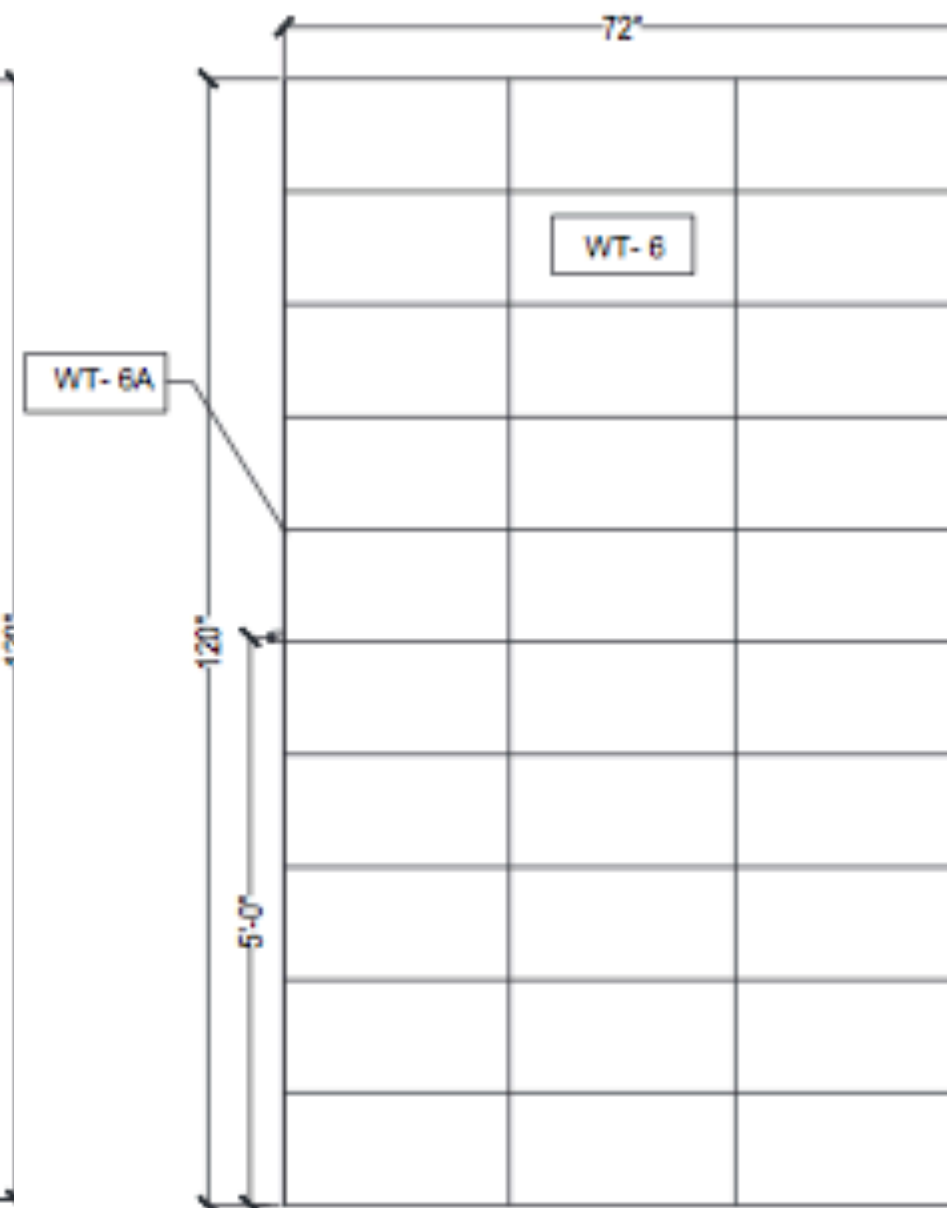
○ MASTER SHOWER KEY PLAN



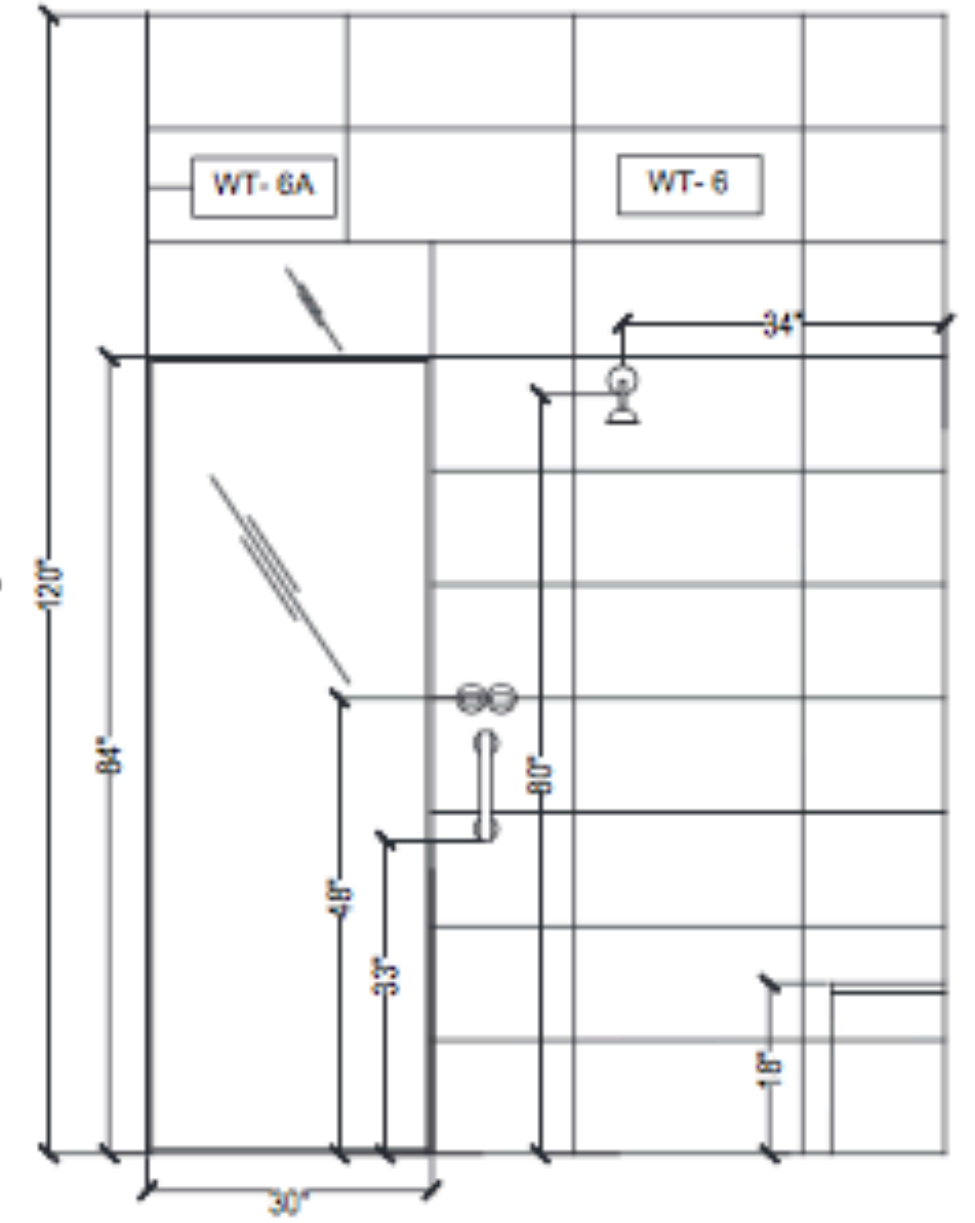
○ A MASTER SHOWER ELEVATION



○ B MASTER SHOWER ELEVATION



○ C MASTER SHOWER ELEVATION



○ D MASTER SHOWER ELEVATION



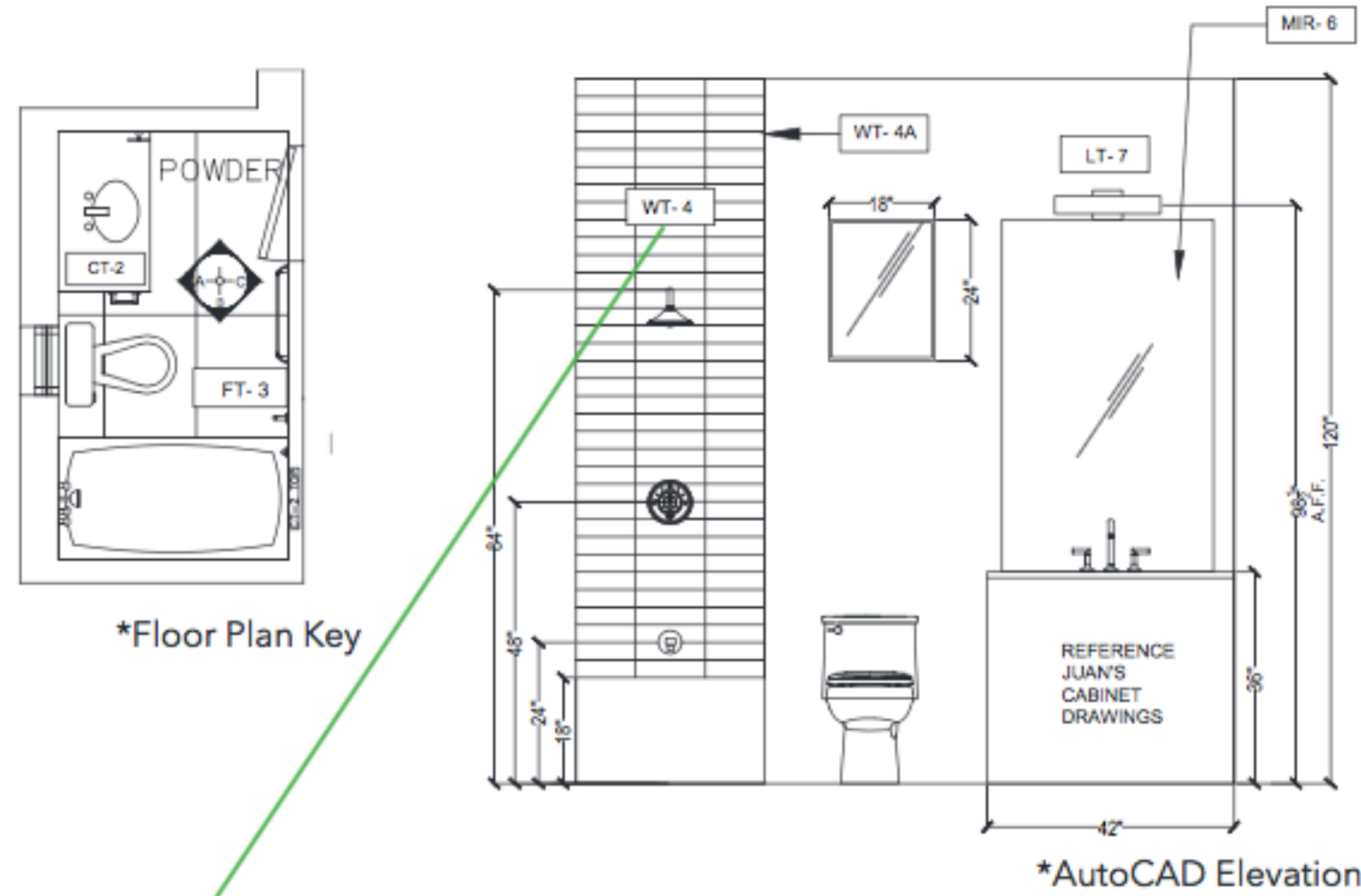
how to create necessary drawings



A KITCHEN



adding tags to your drawings

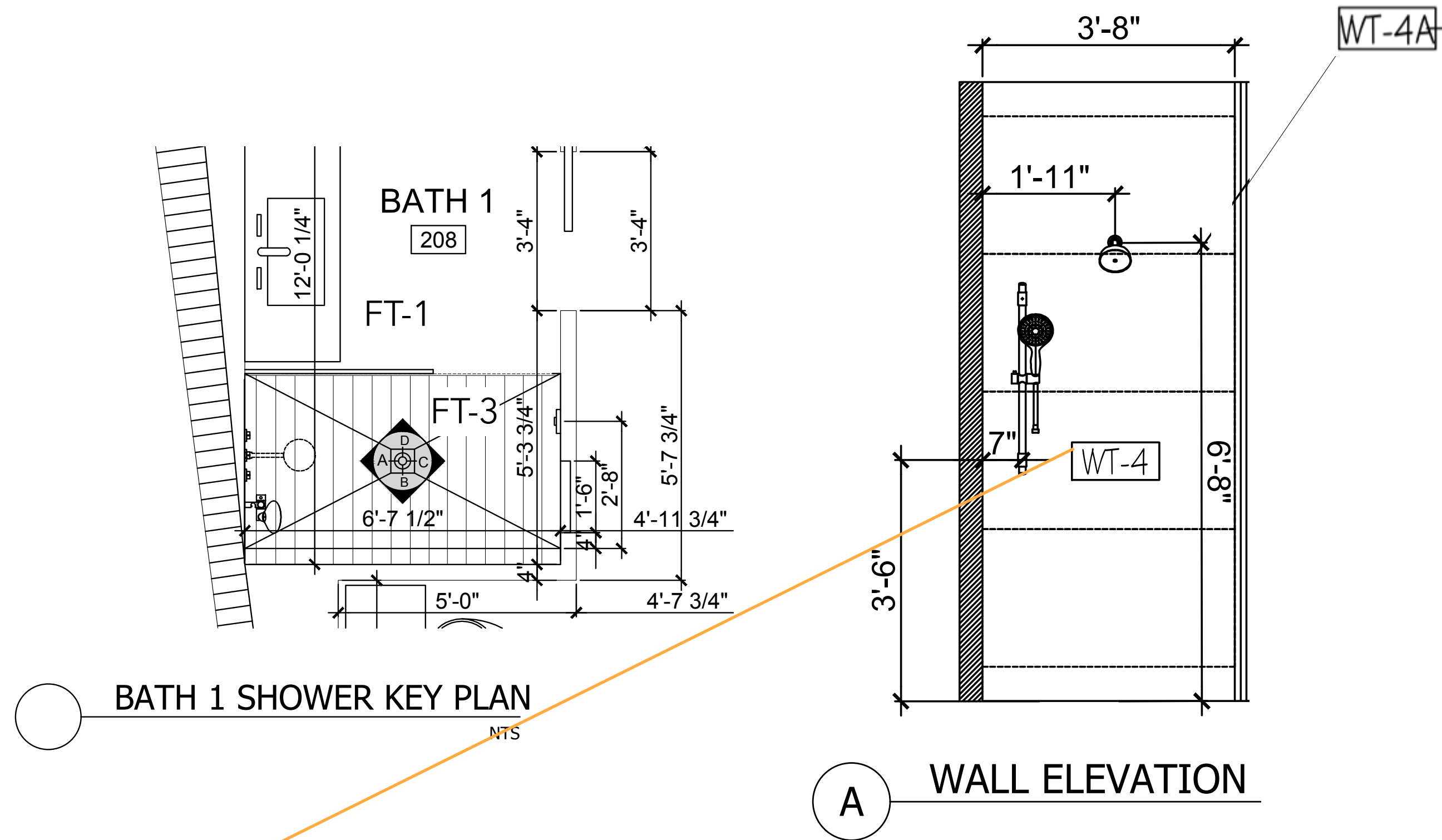




WT-4	-POWDER SHOWER WALLS -POWDER VANITY WALL		STONETALK	3" X 12"	GREY RULLATTA	ARIZONA TILE	STRAIGHT SET	LATICRETE #78 STERLING SILVER, TIGHT GROUT 1/16"	
WT-4A	-POWDER TRIM		JOLLY	TBD	STONE GREY	SCHLUTER	N/A	N/A	INSTALLER TO DETERMINE QUANTITY NEEDED.

*Finish Schedule



adding tags to your drawings



WT-4	BATH 1 SHOWER		BELLE MARBRE	24X48	NATURAL FINISH	FACINGS OF AMERICA	STRAIGHT STACK	MAPEI 93 WARM GRAY
WT-4A	BATH 1 SHOWER WALL TRIM		JOLLY		SATIN ANODIZED ALUMINUM (AE)	SCHLUTER		



when things don't go as planned

***I recently fired a client who kept changing her mind after we had already "finalized" the finish schedule, redrawn the elevations and sent updates to the builder. Revision after revision after revision. I would get her approval that this selection was going to be the "Final" selection and then she would call the builder and get the names of more showrooms she could go to. I knew at that point I needed to step aside. I knew with all the miscommunication going to the builder and trades, it was not going to be a good situation.